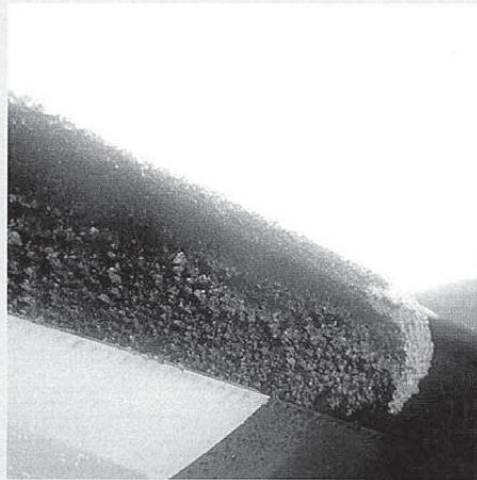


Dealing with icing

Should the pilot encounter icing conditions in flight, some recommendations are:

- In addition to using nacelle anti-icing and wing anti-icing according to procedures, the pilot should keep an eye on the icing process: accretion rate, type of cloud.
- When rapid icing is encountered in stratiform cloud, a moderate change of altitude will significantly reduce the accumulation rate. ATC is obliged to allow a level change if the pilot notifies an operational requirement.



Airbus Getting to Grips with Cold Weather Operations

- 20a In which conditions do flights most often encounter icing?
- b What precautions can be taken against ice build-up in flight and on the ground?
 - c Talk about your experience of the effects of ice on aircraft performance and safety.
 - d What actions may ATC have to take to assist flight crews in icing conditions?
- 21a **02.11** Listen to a description of a turboprop flight in New Zealand which encounters severe icing conditions. Mark the following statements True (T) or False (F).
- 1 The flight left Christchurch at 21:08.
 - 2 The First Officer asked for a change of routeing.
 - 3 At 21:22, ATC instructed the flight to descend from FL 130 to 11,000 feet.
 - 4 The aircraft descended at 500 feet per minute.
 - 5 The First Officer read back the altimeter setting.
 - 6 The Flight Data Recorder showed that the aircraft had encountered turbulence.
 - 7 Ice build-up on the transponder may have obstructed data transmission.
 - 8 The aircraft disappeared from the controller's screen.
- c **Student A → p134** **Student B → p142** Use the cues on your page to ask your partner questions about the New Zealand flight.
- A** Did the aircraft depart on time?
- 22 **Pilots → p150** **ATCOs → p160** Take turns to acknowledge lack of understanding and give clarification. Read your transmissions to your partner. They will say if they do not understand or are not sure. Find another, simpler or more correct way of transmitting the same information. Then change roles.
- Pilot** We are executing a missed approach.
ATCO Say again
Pilot We are going around.